



# SOLUX Co., Ltd

## BEYOND THE LIGHTING

Trusted Products | Enhancing the quality of life | Contributing to customers' happiness



# WHY DO BIG CORPORATES CHOOSE SOLUX?



## Strong Partnership

Solux has built relationship with construction giants by continuously supplying for decades. Solux also cooperates with institutions such as Korea Institute of Lighting Technology for joint research.



## Advanced R&D Center

Solux R&D center is staffed with personnel with years of experience and specialized knowledge in the area of circuit, light guide plate, simulation and lighting design.



## Production Facilities

Solux is equipped with fully integrated manufacturing system. With a variety of latest machines, Solux manufactures lighting fixtures from a beginning to an end.



## Customization Service

Solux provides customized products professionally designed to satisfy customers' needs on each project. Lighting experts design the most suitable lighting with consideration for space and usage.

# MAJOR CLIENTS

## MAJOR CLIENTS



SAMSUNG C&T



posco

KUMHO E&C



Hanwha  
Engineering&Construction



LOTTE E&C



DAEWOO E&C



WOOMI  
CONSTRUCTION



KOREA LAND & HOUSING  
CORPORATION

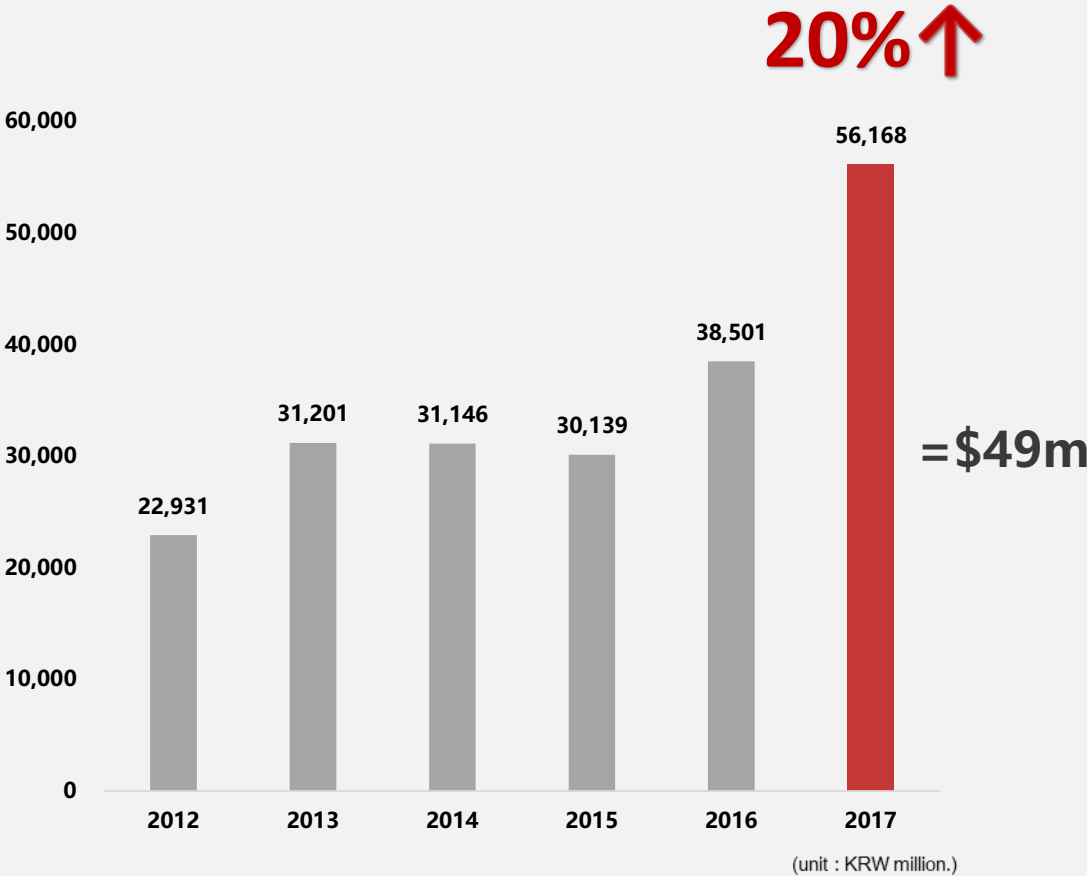


Hoban Construction

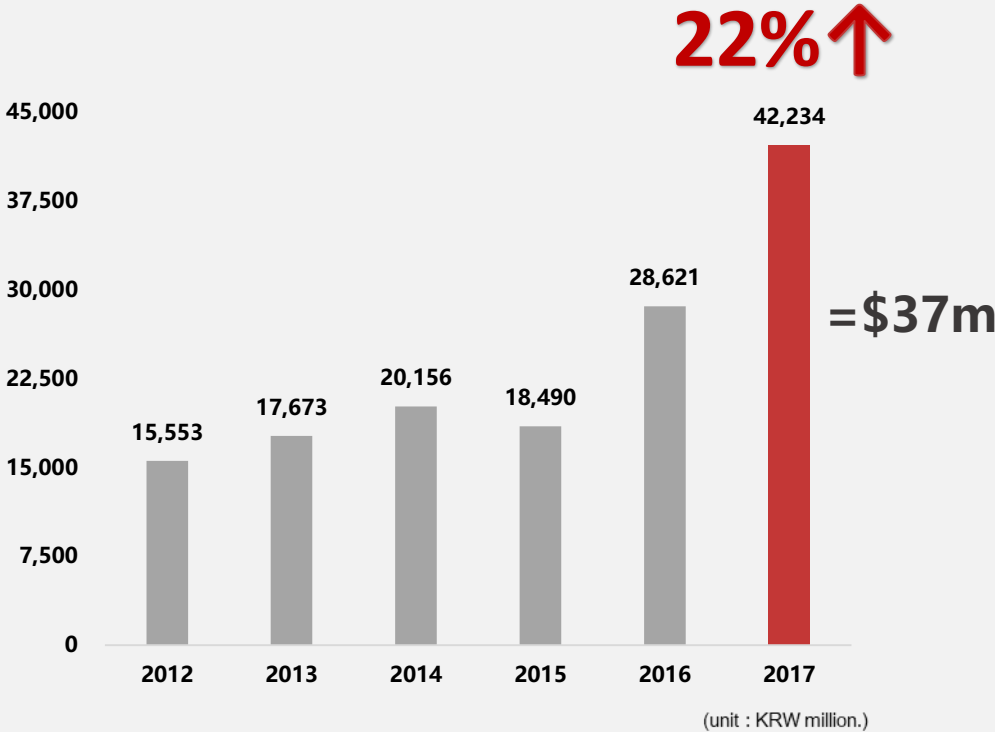
KOLON GLOBAL CORP.

# BUSINESS PERFORMANCE

## Sales Growth



## Asset Growth





# PRODUCTION FACILITIES

Aerial View





# PRODUCTION FACILITIES

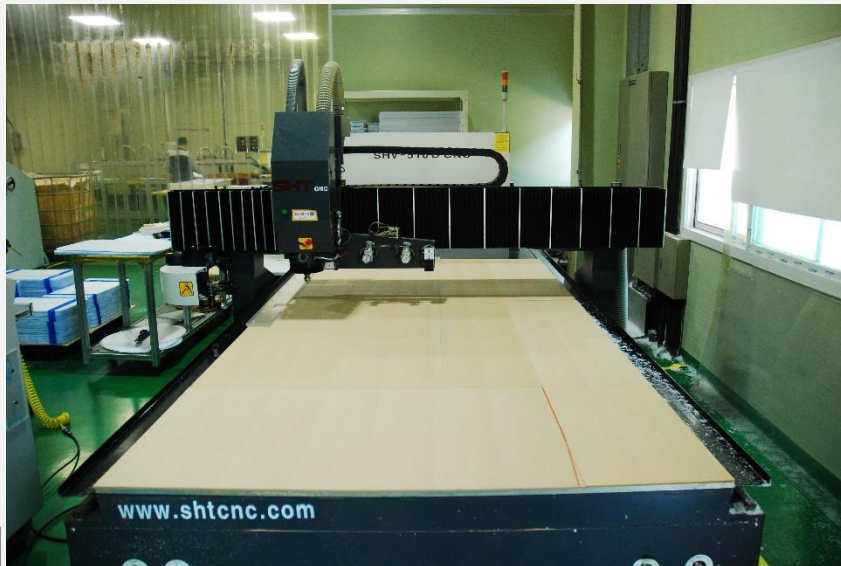
▼ Metal Processor



▼ Acrylic Cutter



CNC Router ▶



◀ Acrylic Polisher





# PRODUCTION FACILITIES

▼ Painter



▼ LGP Processor



SMT ▶



◀ Assembly





# BUSINESS PORTFOLIO

"Trusted products, Enhancing the quality of life, Contributing to customers' happiness"



Hannam The Hill



The Plaza Hotel



Cheonan Galleria



Sindorim Technopark



Seoul Forest Galleria Foret



Seoul Forest Trimage



Yongsan Hotel



Naver Headquarter

- One of **largest lighting production facilities** in Korea (Wonju factory & Gongju factory)
- **Great** number of contracts with **major construction companies** for decades
- **Diversified project portfolio** (Hotel, Department store, Shopping mall, Hospital, Apartment and more)



# BUSINESS PORTFOLIO

“Trusted products, Enhancing the quality of life, Contributing to customers’ happiness”

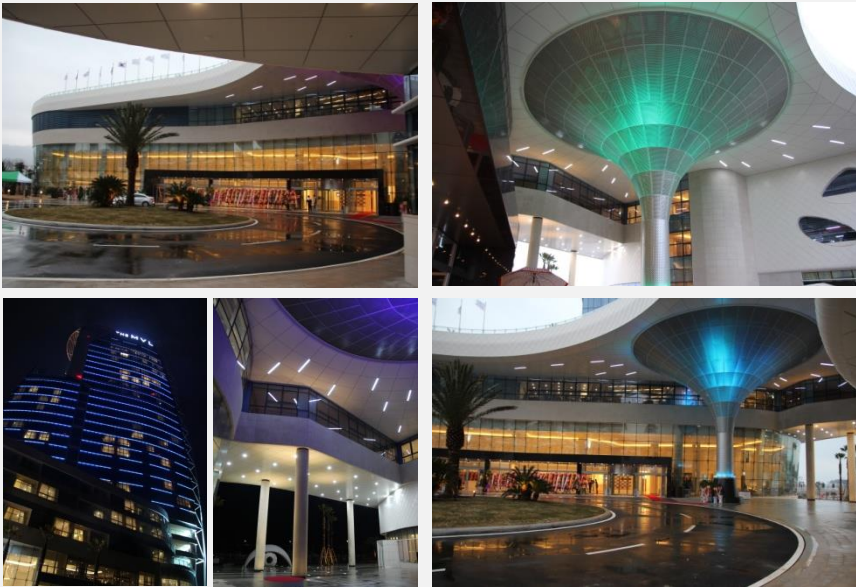
National Museum  
of Korea ▶



Gocheok Baseball  
Field ▶



◀ Korea University 100<sup>th</sup> Anniversary  
Memorial Hall



◀ Ilsan MVL Hotel

# BUSINESS PORTFOLIO

"Trusted products, Enhancing the quality of life, Contributing to customers' happiness"

## NAVER HEADQUARTER in Bundang





# BUSINESS PORTFOLIO

"Trusted products, Enhancing the quality of life, Contributing to customers' happiness"



HEADQUARTER

in Pangyo



# BUSINESS PORTFOLIO

"Trusted products, Enhancing the quality of life, Contributing to customers' happiness"

AhnLab

HEADQUARTER

in Pangyo





# BUSINESS PORTFOLIO

"Trusted products, Enhancing the quality of life, Contributing to customers' happiness"



Yonghoman W Complex  
in Busan



# BUSINESS PORTFOLIO

"Trusted products, Enhancing the quality of life, Contributing to customers' happiness"





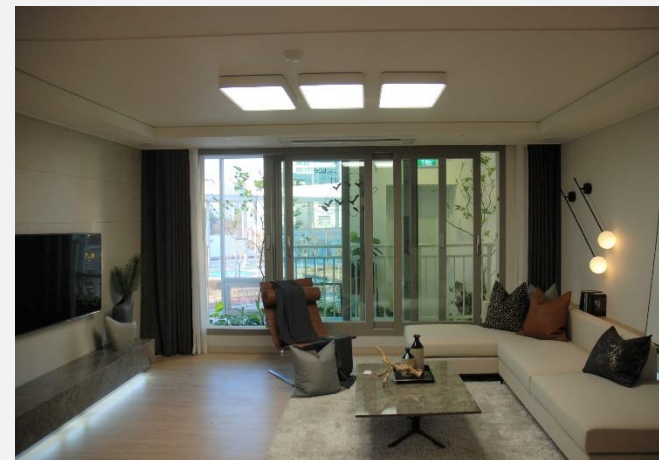
# BUSINESS PORTFOLIO

"Trusted products, Enhancing the quality of life, Contributing to customers' happiness"




FOUR WELL CITY

in Hanam



# BUSINESS PORTFOLIO

"Trusted products, Enhancing the quality of life, Contributing to customers' happiness"

KUMHO E&C 

KUMHO OULIM

in Kunsan





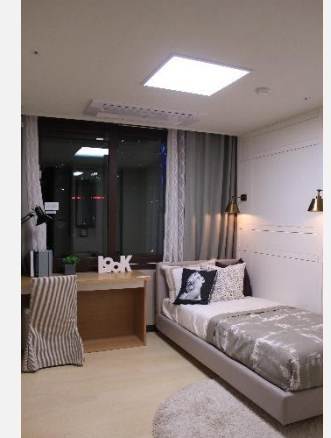
# BUSINESS PORTFOLIO

"Trusted products, Enhancing the quality of life, Contributing to customers' happiness"



**PARKHABIO PRUGIO**

in Seoul



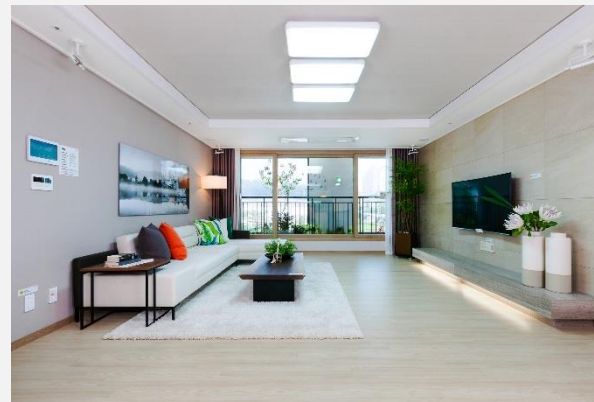
# BUSINESS PORTFOLIO

"Trusted products, Enhancing the quality of life, Contributing to customers' happiness"



**YEONGJONG PRUGIO**

in Incheon





# BUSINESS PORTFOLIO

"Trusted products, Enhancing the quality of life, Contributing to customers' happiness"



▲ Highvill Park Kazakhstan (Apartment)



▲ Bismayah New City, Iraq (Apartment)



▲ Hanoi Ministry of Foreign Affairs, Vietnam (Office light)

# BUSINESS PORTFOLIO

"Trusted products, Enhancing the quality of life, Contributing to customers' happiness"



▲ UAE Ministry of Foreign Affairs  
(Office lights)



▲ Yen Binh Samsung Electro-Mechanics  
Factory (Office lights)





premium  
collection

Passionate company  
Passionate people



# Premium Edge-lit Collection



Glare Free · Easy Installation · Uniform Illumination · Slim Design



# Premium Edge-lit



Solux Edge-lit lighting creates bright and uniform illumination. Soft Edge light gives comfort to eyes and delivers pleasant mood to space.



# Premium Edge-lit

□ LIGHT IMAGE



□ DESCRIPTION

|              |                        |
|--------------|------------------------|
| MATERIAL     | STEEL, ACRYLIC         |
| LAMP         | LED 36W                |
| SIZE         | W595 X D595 X H19      |
| POSITION     | RECESSED LIGHT (T BAR) |
| MODEL No.    | SETB-L001              |
| MANUFACTURER | Solux Co., Ltd         |

□ LIGHT IMAGE



□ DESCRIPTION

|              |                        |
|--------------|------------------------|
| MATERIAL     | STEEL, ACRYLIC         |
| LAMP         | LED 36W                |
| SIZE         | W1195 X D295 X H19     |
| POSITION     | RECESSED LIGHT (T BAR) |
| MODEL No.    | SETB-L002              |
| MANUFACTURER | Solux Co., Ltd         |



# Premium Edge-lit

□ LIGHT IMAGE



□ DESCRIPTION

|              |                        |
|--------------|------------------------|
| MATERIAL     | STEEL, ACRYLIC         |
| LAMP         | LED 45W                |
| SIZE         | W1195 X D595 X H19     |
| POSITION     | RECESSED LIGHT (T BAR) |
| MODEL No.    | SETB-L003              |
| MANUFACTURER | Solux Co., Ltd         |

□ LIGHT IMAGE



□ DESCRIPTION

|              |                      |
|--------------|----------------------|
| MATERIAL     | STEEL, ACRYLIC       |
| LAMP         | LED 36W              |
| SIZE         | W600 X H33           |
| POSITION     | SURFACE MOUNTD LIGHT |
| MODEL No.    | SEEI-L003            |
| MANUFACTURER | Solux Co., Ltd       |

# Premium Edge-lit

□LIGHT IMAGE



□DESCRIPTION

|              |                       |
|--------------|-----------------------|
| MATERIAL     | STEEL, ACRYLIC        |
| LAMP         | LED 36W               |
| SIZE         | W720 X D420 X H31     |
| POSITION     | SURFACE MOUNTED LIGHT |
| MODEL No.    | SEEI-L005 (SLIM)      |
| MANUFACTURER | Solux Co., Ltd        |

□LIGHT IMAGE



□DESCRIPTION

|              |                                       |
|--------------|---------------------------------------|
| MATERIAL     | STEEL, ACRYLIC                        |
| LAMP         | LED 36W                               |
| SIZE         | W625 X D625 X H31 / W520 X D520 X H31 |
| POSITION     | SURFACE MOUNTED LIGHT                 |
| MODEL No.    | SEEI-L001 / SEEI-L002 (SLIM)          |
| MANUFACTURER | Solux Co., Ltd                        |



# Premium Edge-lit

□ LIGHT IMAGE



□ DESCRIPTION

|              |  |
|--------------|--|
| MATERIAL     | STEEL, ACRYLIC                         |
| LAMP         | LED 36W / LED 25W                      |
| SIZE         | W1280 X D320 X H23 / W635 X D320 X H23 |
| POSITION     | SURFACE MOUNTED LIGHT                  |
| MODEL No.    | SEEO-L002 / SEEO-L003 (FLAT)           |
| MANUFACTURER | Solux Co., Ltd                         |

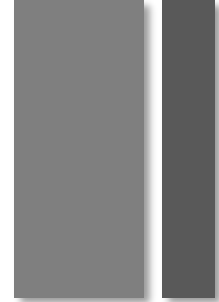
□ LIGHT IMAGE



□ DESCRIPTION

|              |                                       |
|--------------|---------------------------------------|
| MATERIAL     | STEEL, ACRYLIC                        |
| LAMP         | LED 36W / LED 15W                     |
| SIZE         | W635 X D635 X H23 / W320 X D320 X H23 |
| POSITION     | SURFACE MOUNTED LIGHT                 |
| MODEL No.    | SEEO-L001 / SEEO-L008 (FLAT)          |
| MANUFACTURER | Solux Co., Ltd                        |

# Designers' Collection





# Designers' Collection

□ LIGHT IMAGE



□ DESCRIPTION

|              |                      |
|--------------|----------------------|
| MATERIAL     | STEEL, ACRYLIC       |
| LAMP         | LED 12W              |
| SIZE         | W250 X H60           |
| POSITION     | SENSOR LIGHT         |
| MODEL No.    | SESL-L106 (D-CIRCLE) |
| MANUFACTURER | Solux Co., Ltd       |

□ LIGHT IMAGE



□ DESCRIPTION

|              |                                   |
|--------------|-----------------------------------|
| MATERIAL     | STEEL, ACRYLIC                    |
| LAMP         | LED 35W / LED 20W                 |
| SIZE         | W650 X H125 / W450 X H150         |
| POSITION     | PENDANT LIGHT                     |
| MODEL No.    | SEPL-L268 / SEPL-L269 (SPACESHIP) |
| MANUFACTURER | Solux Co., Ltd                    |

# Designers' Collection

□ LIGHT IMAGE



□ DESCRIPTION

|              |                  |
|--------------|------------------|
| MATERIAL     | STEEL, ACRYLIC   |
| LAMP         | E26 X 3          |
| SIZE         | W400 X H370      |
| POSITION     | PENDANT LIGHT    |
| MODEL No.    | SEPL-L200 (COCO) |
| MANUFACTURER | Solux Co., Ltd   |

□ LIGHT IMAGE



□ DESCRIPTION

|              |                       |
|--------------|-----------------------|
| MATERIAL     | STEEL, ACRYLIC        |
| LAMP         | LED 25W               |
| SIZE         | W550 X H140           |
| POSITION     | PENDANT LIGHT         |
| MODEL No.    | SEPL-L284 (SPACESHIP) |
| MANUFACTURER | Solux Co., Ltd        |



# Designers' Collection

□ LIGHT IMAGE



□ DESCRIPTION

|              |                       |
|--------------|-----------------------|
| MATERIAL     | STEEL, ACRYLIC, AL    |
| LAMP         | LED 50W               |
| SIZE         | W620 X H620 X H80     |
| POSITION     | SURFACE MOUNTED LIGHT |
| MODEL No.    | SERL-L257 (WIND)      |
| MANUFACTURER | Solux Co., Ltd        |

□ LIGHT IMAGE



□ DESCRIPTION

|              |                       |
|--------------|-----------------------|
| MATERIAL     | STEEL, ACRYLIC, ABS   |
| LAMP         | LED 50W               |
| SIZE         | W620 X D620 X H95     |
| POSITION     | SURFACE MOUNTED LIGHT |
| MODEL No.    | SERL-L277 (PLAIN)     |
| MANUFACTURER | Solux Co., Ltd        |

# Designers' Collection

□ LIGHT IMAGE



□ DESCRIPTION

|              |                       |
|--------------|-----------------------|
| MATERIAL     | STEEL, ACRYLIC        |
| LAMP         | LED 40W / 3 SET       |
| SIZE         | W700 X D400 X H85     |
| POSITION     | SURFACE MOUNTED LIGHT |
| MODEL No.    | SELL-L277 (WIND)      |
| MANUFACTURER | Solux Co., Ltd        |

□ LIGHT IMAGE



□ DESCRIPTION

|              |                       |
|--------------|-----------------------|
| MATERIAL     | STEEL, ACRYLIC, AL    |
| LAMP         | LED 40W 3 SET         |
| SIZE         | W720 X D420 X H85     |
| POSITION     | SURFACE MOUNTED LIGHT |
| MODEL No.    | SELL-L261 (PLAIN)     |
| MANUFACTURER | Solux Co., Ltd        |



# Designers' Collection

□ LIGHT IMAGE



□ DESCRIPTION

|              |                       |
|--------------|-----------------------|
| MATERIAL     | STEEL, ACRYLIC, ABS   |
| LAMP         | LED 40W               |
| SIZE         | W630 X D630 X H100    |
| POSITION     | SURFACE MOUNTED LIGHT |
| MODEL No.    | SERL-L321 (WAVE)      |
| MANUFACTURER | Solux Co., Ltd        |

□ LIGHT IMAGE



□ DESCRIPTION

|              |                          |
|--------------|--------------------------|
| MATERIAL     | STEEL, ACRYLIC           |
| LAMP         | LED bulb 1 EA (E26 base) |
| SIZE         | W175 X H230              |
| POSITION     | PENDANT LIGHT            |
| MODEL No.    | SEPL-L393 (BELL)         |
| MANUFACTURER | Solux Co., Ltd           |

# Designers' Collection

□ LIGHT IMAGE



□ DESCRIPTION

|              |                      |
|--------------|----------------------|
| MATERIAL     | STEEL, ACRYLIC       |
| LAMP         | LED 5W               |
| SIZE         | W110 X H333          |
| POSITION     | RECESSED LIGHT       |
| MODEL No.    | SEDL-LI02 (SMOOTHIE) |
| MANUFACTURER | Solux Co., Ltd       |

□ LIGHT IMAGE



□ DESCRIPTION

|              |                       |
|--------------|-----------------------|
| MATERIAL     | STEEL, ACRYLIC        |
| LAMP         | LED 12W               |
| SIZE         | W260 X D260 X H46     |
| POSITION     | RECESSED SENSOR LIGHT |
| MODEL No.    | SESL-LI29 (CHARON)    |
| MANUFACTURER | Solux Co., Ltd        |



# Designers' Collection

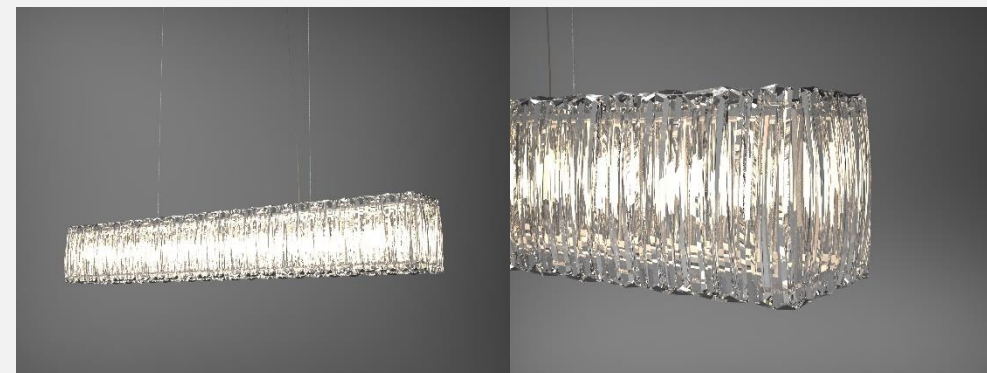
□ LIGHT IMAGE



□ DESCRIPTION

|              |                    |
|--------------|--------------------|
| MATERIAL     | STEEL, ACRYLIC     |
| LAMP         | LED 20W            |
| SIZE         | W729 X D119 X H141 |
| POSITION     | PENDANT LIGHT      |
| MODEL No.    | SEPL-L369 (FLORA)  |
| MANUFACTURER | Solux Co., Ltd     |

□ LIGHT IMAGE



□ DESCRIPTION

|              |   |
|--------------|---|
| MATERIAL     | STEEL, ACRYLIC                              |
| LAMP         | LED bulbs 5ea / 7ea (E17 base)              |
| SIZE         | W875 X D170 X H180<br>/ W1180 X D170 X H180 |
| POSITION     | PENDANT LIGHT                               |
| MODEL No.    | SEPL-L383 / SEPL-L394 (RIPPLES)             |
| MANUFACTURER | Solux Co., Ltd                              |

# Designers' Collection

□ LIGHT IMAGE



□ DESCRIPTION

|              |                             |
|--------------|-----------------------------|
| MATERIAL     | STEEL, ACRYLIC              |
| LAMP         | LED 20W                     |
| SIZE         | W500 X H20                  |
| POSITION     | PENDANT LIGHT               |
| MODEL No.    | SEEP-L001 (SUSPENDED DONUT) |
| MANUFACTURER | Solux Co., Ltd              |

□ LIGHT IMAGE



□ DESCRIPTION

|              |                                  |
|--------------|----------------------------------|
| MATERIAL     | STEEL, ACRYLIC                   |
| LAMP         | LED 60W, LED 51W, LED 20W        |
| SIZE         | 550 / 450 / 350                  |
| POSITION     | PENDANT LIGHT                    |
| MODEL No.    | SEPL-L384/ L385/ L386 (MILKYWAY) |
| MANUFACTURER | Solux Co., Ltd                   |



# THANK YOU



Premium  
Light Quality

Edge-lit LED lighting creates bright and uniform illumination.  
Soft Edge light gives comfort to eyes and delivers pleasant mood to space.

